
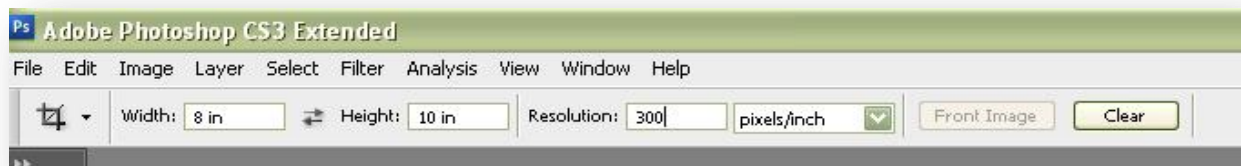


When Digital Photography meets digital imaging, there is a fine line between the two. This is a gray area that gets defined by experience and an understanding that most of the work needs to be done at the moment of taking the picture. But at the same time, everyone knows that things go wrong and a little extra help isn't always a bad thing.

Here are the three main tools that you can use while developing your photograph:

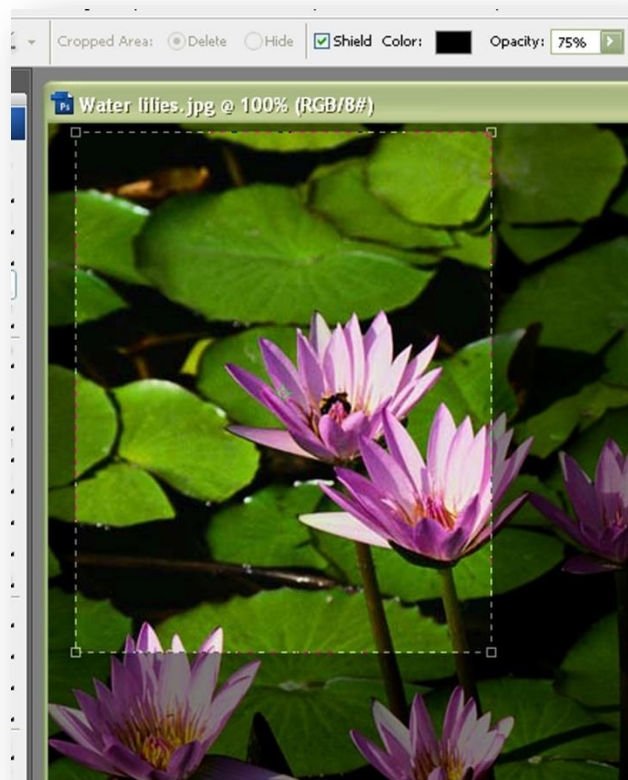
CROPPING:

The cropping tool is represented by this symbol:  and is found on the toolbox on the left side of the program screen. When using this tool you absolutely need to make sure that you have the right settings on the top of the screen. This makes sure that when you crop the photo doesn't become a bizarre size and looks odd when printing. Here is what it should look like when you add the settings:



When you've got these settings, go ahead and drag your box around the area that you wish to keep. Any section in the dark will be cropped off. If you want to suddenly change the aspect of your canvas from Portrait to Landscape, simply click on the two arrows in between the size of your cropping box and it will reverse itself. REMEMBER when cropping it is VERY important to keep Rule of Thirds and Power points in mind! Without that your entire focus of the image will be lost when you crop it away. To the right you will see what it looks like while cropping.

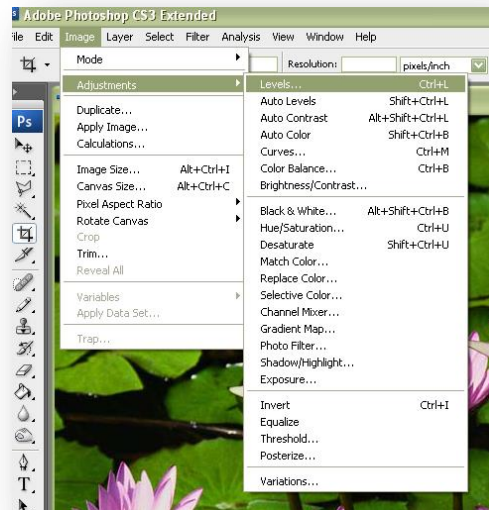
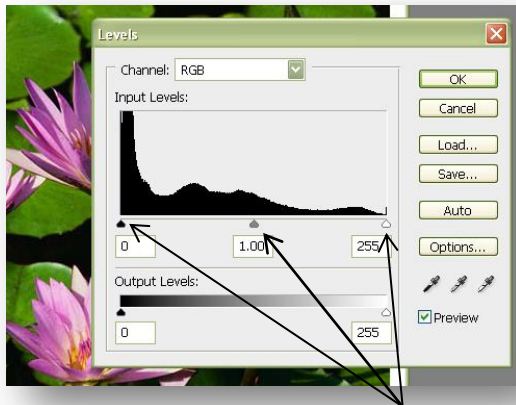
Click **ENTER** when finished and you will see the finished image on the screen ready to move on to the next step!



LEVELS:

Arguably one of the more used tools in the PhotoShop arsenal! Levels allow the artist to balance the image with the blacks, whites and grays. BUT there is a point where it does go too far...

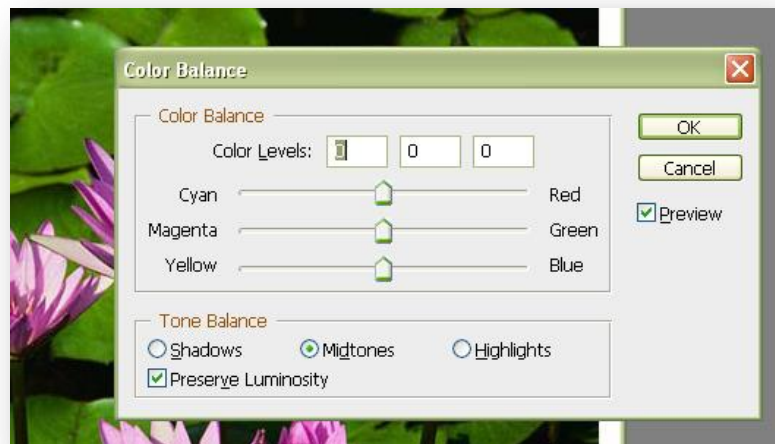
The image to the right is where Levels can be located. The shortcut to bring up the menu is CTRL+L. Here's what the actual window will look like:



It's all about the black, white and gray tab underneath the island looking black blob in the middle. By moving these around, you're adding/subtracting the amount of brightness and contrast in the picture. As you practice with this you'll see how far it takes the photo. When using this tool as more of an Artsy image this will create some awesome effects.

COLOR BALANCE:

The transition from camera to PhotoShop changes the outlook of the image almost every time. The Levels that you've played with is a good start, but sometimes you've got to go a tiny bit further with the actual COLOR of the image. Color Balance is found in the same place as Levels (its shortcut is CTRL+B). This is what it looks like:



As you move the tabs around it adds more of the specific color that it moves to. To be more specific you can mess with the colors in the dark and lighter areas of the photo. It's always a good idea to make sure that the Preserve Luminosity is checked off as well as Preview! That way you can see exactly what it happening to your photo.

AGAIN! Be careful that you don't go too far with it! This can create excellent effects, but also takes you into the Digital Imaging realm.